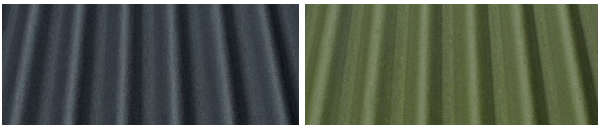
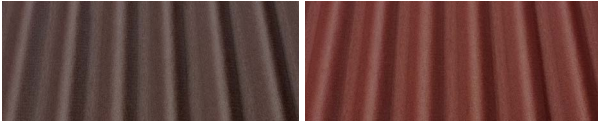


Colours



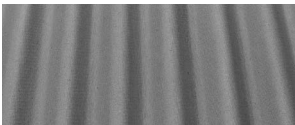
Black

Green



Brown

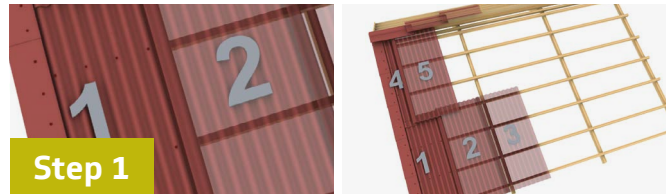
Red



Grey

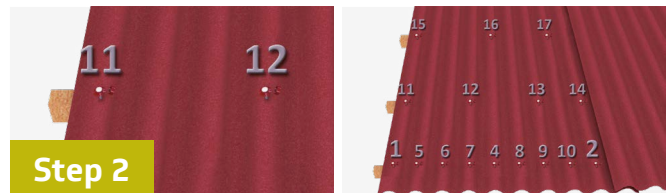
| Properties | |
|---------------------------|----------------------------|
| Length | 200 cm |
| Width | 95 cm |
| Thickness | 3 mm |
| Corrugation height | 38 mm |
| Weight per m ² | 3,4 kg/m ² |
| Weight per sheet | 6,4 kg |
| Surface | 1,9 m ² |
| Carbon footprint | 4 kg eq CO2/m ² |

Installation Manual



Step 1

- Start laying sheets over the gutter line with max 7 cm overhang. Lay sheets in the opposite direction to the prevailing winds.
- The second row has to be started with half a sheet cut parallel to the corrugations (to misalign side overlaps).



Step 2

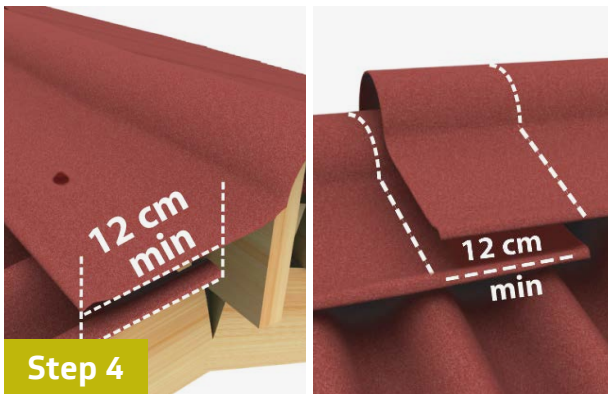
- Approximately 20 fixings should be used per sheet. Every corrugation should be fixed at eaves, overlaps and ridges.
- Every second corrugation has to be fixed at the intermediate purlins.
- The fixing at the intermediate purlins has to be staggered.



Step 3

- Optimise aesthetic, waterproofing, and wind uplift resistance by using a verge element. Fix it first into the sidewall, then on the top of the corrugation.

Installation Manual



Step 4

- The ridge element has to overlap the Onduline® sheet min 12 cm. The ridge elements are fixed in opposite direction to the prevailing winds.



Step 5: Roof support

- Batten rules: The roof pitch and occasional load (especially wind and snow) determine the distance between the battens. Maximum distance: 45 cm.

Maintain your roof regularly for improved durability. Remove vegetation and leaf debris, take care of evacuations, accessories and structure, and maintain continuous ventilation.

| Roof pitches | | |
|--------------------------|---------------------|---------------------|
| 9-17 % | 17-27 % | > 27 % |
| Maximum battens distance | | |
| | | |
| Roof deck (OSB) | 45 cm or roof deck | 61 cm or roof deck |
| Minimum end overlap | | |
| | | |
| 30 cm | 20 cm | 17 cm |
| Minimum side overlap | | |
| | | |
| 2 corrugations | 1 corrugation | 1 corrugation |
| Effective sheet coverage | | |
| 1,29 m ² | 1,54 m ² | 1,56 m ² |

Calculate the pitch of your roof

Minimum pitch required: 9%

$$\text{Pitch (\%)} = \frac{h}{b} \times 100$$

