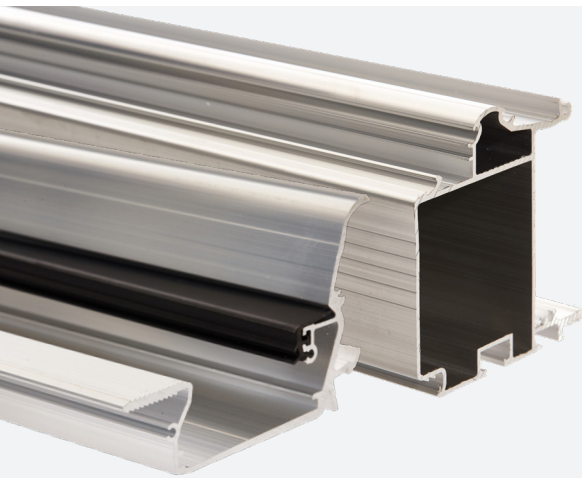




PRODUCT DATA SHEET

POLYCARBONATE ROOFING SOLUTIONS



WALL PLATE & EAVESBEAM

ABOUT WALL PLATE & EAVESBEAM

Wall Plate and Eavesbeam are available in 3 m, 4 m and 6 m lengths in white and brown.

The Eavesbeam is for use with self-supported glazing bars. It can be used with clip-on gutter brackets or screw-fixed gutter brackets.

The Wall Plate is also for use with self-supported glazing bars. It can be glazed with any thickness from 16 mm to 35 mm polycarbonate glazing.

SHEET SIZE AND WEIGHT

PRODUCT	WEIGHT
Eavesbeam Weight	2 Kg/m
Wall Plate Weight	2 Kg/m

TECHNICAL DRAWING

