



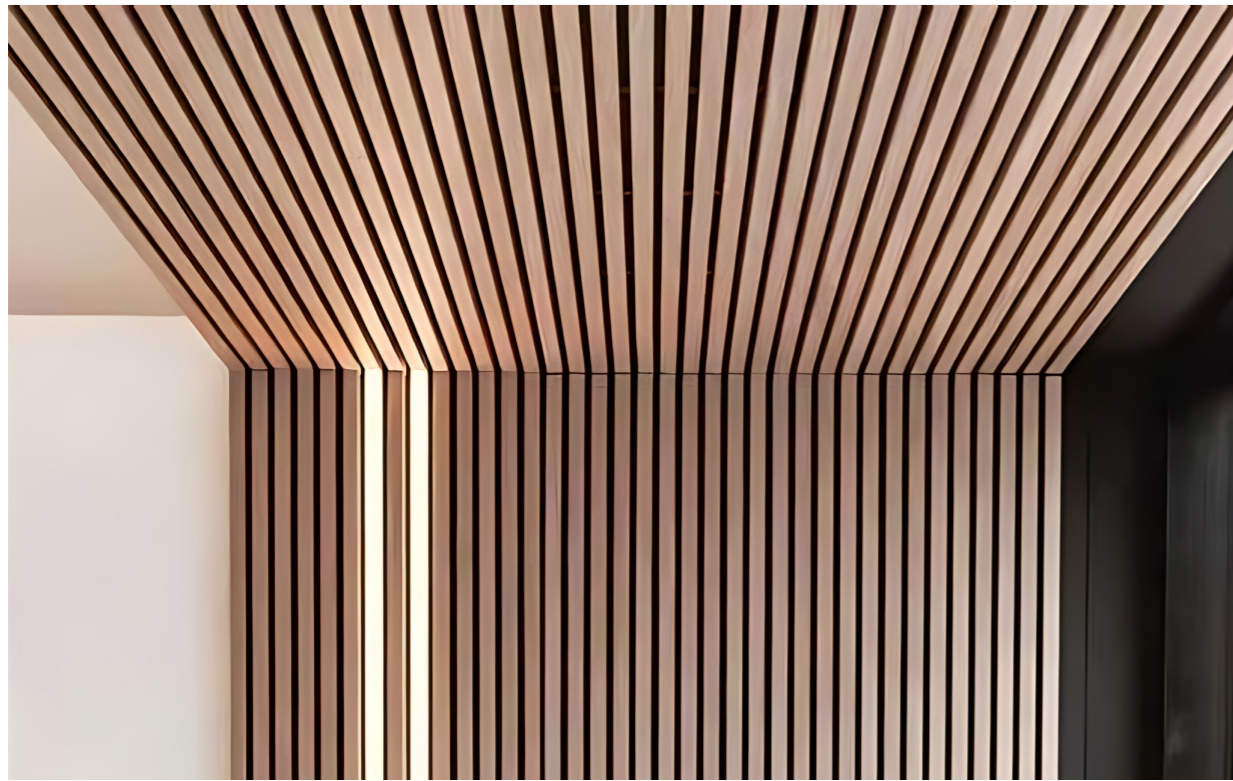
# TRITON CLADDING

PRODUCT BROCHURE

**A sleek and stylish timber alternative,  
designed to transform any space.**



For more information or technical advice, call our team on 01278 455326



## INTRODUCING TRITON CLADDING

Slatted cladding offers a stylish and lightweight solution, ideal for those seeking a contemporary look with minimal effort. Its easy installation and excellent durability ensure a robust and polished appearance from all angles.

In contrast, Shiplap cladding combines traditional looks with modern style, featuring sleek lines and a flawless finish. Both options provide versatile, durable and attractive choices for enhancing any building's exterior.

For more information about our TRITON Cladding, call **01278 455326** or email [sales@stormbuildingproducts.com](mailto:sales@stormbuildingproducts.com).

**Note:** Images and colours shown in this brochure are for illustrative purposes only as printing does not allow 100% accuracy transfer for true colour to be reproduced.

### The benefits of TRITON WPC Cladding



10-year warranty



Easy installation



Eco-friendly and environmentally friendly



Versatile



Does not rot, splinter or warp



Durable and long lasting

## TWO STYLES, THREE STUNNING COLOURS

Choose from three stunning colours that perfectly complement any design, ensuring a flawless finish that enhances your outdoor space.

Durable, versatile and eye-catching - whichever style you choose, you're guaranteed a stunning upgrade that lasts.

### SLATTED CLADDING



Charcoal



Light Grey



Golden Teak

### SHIPLAP CLADDING



Charcoal



Grey



Teak

## FREQUENTLY ASKED QUESTIONS

### What is WPC cladding?

Wood-plastic composite (WPC) cladding is a revolutionary cladding with a unique composition that replicates wood without the maintenance or hazards of traditional timber cladding.

### What is the difference between composite cladding and wood?

Traditional cladding is susceptible to many issues over time; rotting, splintering and warping to name a few. However, composite cladding ensures a pristine 'wood look' - with much greater durability.

### What is the best thing about WPC Cladding?

The best thing about WPC cladding is that it is safe, easy to install, and requires low maintenance.

## COMPONENTS LIST

### Slatted Cladding (2.5m)



Code	Description
WPCSLAT25-CH	2.5M WPC SLATTED CLADDING CHARCOAL
WPCSLAT25-GY	2.5M WPC SLATTED CLADDING GREY
WPCSLAT25-TK	2.5M WPC SLATTED CLADDING GOLDEN TEAK

Available in an ideal 2.5-metre length, perfect for both residential and commercial applications and provides an excellent combination of durability and aesthetics.

### Slatted Cladding (3.6m)



Code	Description
WPCSLAT36-CH	3.6M WPC SLATTED CLADDING CHARCOAL
WPCSLAT36-GY	3.6M WPC SLATTED CLADDING GREY
WPCSLAT36-TK	3.6M WPC SLATTED CLADDING GOLDEN TEAK

For projects requiring longer lengths, 3.6 metres is the perfect choice. These cladding panels are designed to offer an extended reach without compromising on quality or style.

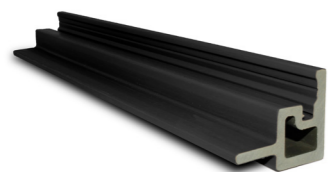
### Slatted Cladding External Corner



Code	Description
WPCSLAT-EXT-CH	3.6M WPC SLATTED CLADDING EXT CORNER CHARCOAL
WPCSLAT-EXT-GY	3.6M WPC SLATTED CLADDING EXT CORNER GREY
WPCSLAT-EXT-TK	3.6M WPC SLATTED CLADDING EXT CORNER GOLDEN

This piece is designed to provide a seamless finish to external corners.

### Slatted Cladding Internal Corner



Code	Description
WPCSLAT-INT-CH	3.6M WPC SLATTED CLADDING INT CORNER CHARCOAL
WPCSLAT-INT-GY	3.6M WPC SLATTED CLADDING EXT CORNER GREY
WPCSLAT-INT-TK	3.6M WPC SLATTED CLADDING EXT CORNER GOLDEN

This piece is designed to provide a seamless finish to internal corners.

## COMPONENTS LIST

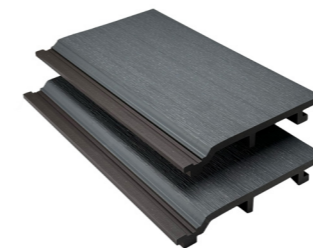
### Shiplap Cladding (2.5m)



Code	Description
WPCSHIP25-CH	2.5M WPC SHIPLAP CLADDING CHARCOAL
WPCSHIP25-GY	2.5M WPC SHIPLAP CLADDING GREY
WPCSHIP25-TK	2.5M WPC SHIPLAP CLADDING GOLDEN TEAK

Shiplap Cladding in an ideal 2.5-metre length, perfect for both residential and commercial applications and provides an excellent combination of traditional looks and durability..

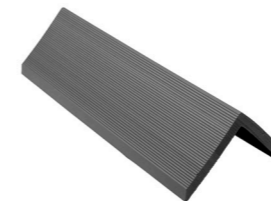
### Shiplap Cladding (3.6m)



Code	Description
WPCSHIP36-CH	3.6M WPC SHIPLAP CLADDING CHARCOAL
WPCSHIP36-GY	3.6M WPC SHIPLAP CLADDING GREY
WPCSHIP36-TK	3.6M WPC SHIPLAP CLADDING GOLDEN TEAK

Shiplap cladding in 3.6 metres is the perfect choice. These cladding panels are designed to offer an extended reach without compromising on quality or style.

### Shiplap Cladding Angle Trim



Code	Description
WPCSHIP-AT-CH	3.6M WPC SHIPLAP CLADDING ANGLE CHARCOAL
WPCSHIP-AT-GY	3.6M WPC SHIPLAP CLADDING ANGLE GREY
WPCSHIP-AT-TK	3.6M WPC SHIPLAP CLADDING ANGLE GOLDEN TEAK

When finishing your project, this trim provides a clean and professional look, but it also protects the edges from wear and tear.

### Cladding Accessories



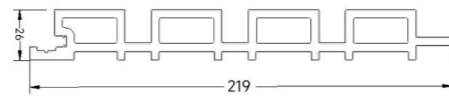
Code	Description
WPCCLAD-CLIP	S/S CLADDING CONNECTOR CLIP PK100
WPCCLAD-SCREW	S/S CLADDING SCREWS PK100
WPCCLAD-STR	S/S CLADDING STARTER CLIP PK20

Our stainless steel connector clips (Pack of 100) and screws (Pack of 100) offer durability and rust resistance, while the starter clips (Pack of 20) provide a solid foundation for your cladding project. These accessories guarantee a professional and lasting finish.

# DATA SHEET

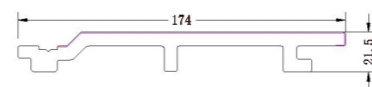
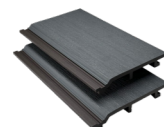
## SLATTED CLADDING

Item	Results
Composition	55% Wood powder/35% HDPE/10% Chemical Additives
Colours	Charcoal, Light Grey, Golden Teak
Thickness and width (Tolerance ± 0.5 mm)	26 mm* 219 mm. Application area 200 mm
Length	2.5m and 3.6m
Density kg/cm <sup>3</sup>	1.32
Water absorption %	Max. 0.5%
Linear thermal expansion coefficient (-20 -80°C)	35.8x10 <sup>-6</sup> K <sup>-1</sup>
Degree of Chalking	Rate 0, No Chalking
Formaldehyde content	None Detected
Heat build-up	Δ T=-2.8°C
Resistance to artificial weathering	After 2000 hours exposure, Δ E*=1.25
Warranty	10 Year Warranty for Splitting, Cracking and Structural Damage



## SHIPLAP CLADDING

Item	Results
Composition	60% Wood powder/30% HDPE/10% Chemical Additives
Colours	Charcoal, Grey, Teak
Thickness and width (Tolerance ± 0.5 mm)	21 mm* 174 mm Application area 150mm
Length	2.5m and 3.6m
Density kg/cm <sup>3</sup>	1.35x10 <sup>-3</sup>
Water absorption %	Max. 0.5%
Linear thermal expansion coefficient (-20 -80°C)	35.8x10 <sup>-6</sup> K <sup>-1</sup>
Degree of Chalking	Rate 0, No Chalking
Formaldehyde content	None Detected
Heat build-up	Δ T=-2.8°C
Resistance to artificial weathering	After 2000 hours exposure, Δ E*=1.25
Warranty	10 Year Warranty for Splitting, Cracking and Structural Damage



# WARRANTY

Southgate Enterprises Ltd (hereinafter "STORM") warrants to the original purchaser that, for the period of time set forth in the following sentence, under normal use and service conditions that STORM TRITON cladding products shall be free from material defects in workmanship and materials, shall not split, splinter, rot or suffer structural damage from termites or fungal decay. The term of such warranty shall be ten (10) years from the original purchase from STORM (in relation to the Replacement Proportion) and shall be installed and maintained according to the manufacturer's guidelines. If a defect occurs within the warranty period, the purchaser must, within ten (10) working days from discovery of the defect but no later than the end of warranty period, notify STORM in writing at the following email and address: sales@stormbuildingproducts.com. Unit 9 Robins Drive Castlefields Industrial Estate, Bridgwater TA6 4DL.

The Purchaser must include proof of purchase along with statement and photos explaining the defect and the date the products were installed in this notification. STORM may request additional information to assist any necessary investigation. After reviewing all information and upon completion of an investigation, STORM shall make a determination with respect to the validity of such a claim. If STORM confirms the Purchaser's claim as valid, STORM's sole responsibility shall be to either replace the defective products or refund the portion of the purchase price paid by the Purchaser for any defective products.

### Other Costs

This warranty shall not cover and STORM shall not be responsible for costs and expenses incurred with respect to the removal of defective STORM TRITON cladding products or the installation of replacement materials, including but not limited by labour and freight. STORM shall have no further liability of obligation except as expressly stated herein. Under no circumstances will STORM be liable for special, incidental or consequential damages, whether such damages are sought in contract, in tort (including but not limited to negligence and strict liability) or otherwise, and STORM's liability with respect to defective STORM TRITON cladding products shall in no event exceed the replacement of such products or refund the purchase price, as described.

### Exclusion

STORM does not warrant against and is not responsible for, and no implied warranty shall be deemed to cover any condition attributable to:

1. Installation of STORM TRITON cladding products and/or failure to avoid by STORM's installation guidelines, including but not limited to gapping.
2. Use of STORM TRITON cladding products beyond normal use and service conditions, or in an application not recommended by STORM guidelines and local codes.
3. Movement, distortion, collapse or setting of the ground the supporting structure on which STORM TRITON cladding is installed.
4. Any act of God (such as, but not limited to, flooding, hurricane, earthquake, thunder and lightning, etc.), environmental conditions (such as, but not limited to, dirt, grease, oil, etc.) or normal weathering.

5. Fading or changes in colour of STORM TRITON cladding products.
6. Handling, storage, abuse or neglect of STORM TRITON cladding products by Purchaser
7. Decay caused by fasteners.
8. Ordinary wear and tear.

This warranty may not be altered or amended except in a written instruction signed by STORM and the Purchaser. No person or entity is authorised by STORM to make; and STORM shall not be bound by any statement or representation as to the quality or performance of STORM TRITON cladding products other than contained in this warranty.

### Replacement Proportion

After the original purchase date, the Purchaser's recovery shall be prorated in the following manner:

Year of Claim	Replacement Ratio (%)
1-3	100%
4-5	70%
6-7	50%
8-9	30%
10+	10%

Storm® and STORM Building Products is a trade mark belonging to Southgate Enterprises Limited.

#### Important note:

Splitting, cracking, and structural damage will only be covered by the warranty if the cladding is installed according to STORM's instructions. Failure to follow these instructions will void the warranty. The warranty does not cover variation or changes in the colour of the TRITON Cladding.



Call **01278 455326**

Visit [stormbuildingproducts.com](http://stormbuildingproducts.com)

Email [sales@stormbuildingproducts.com](mailto:sales@stormbuildingproducts.com)